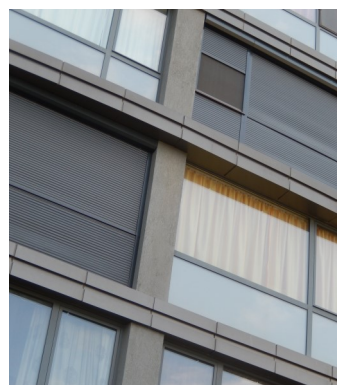
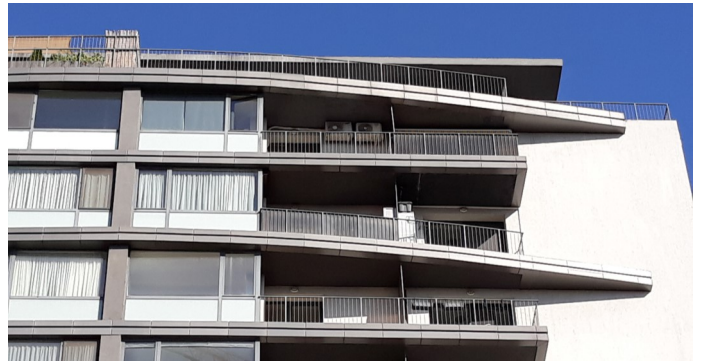




## REBREANU RESIDENTIAL DEV. EVOCASA ARMONIA

Architect	ADEST ARCHITECTURE
Location	Liviu Rebreanu Blvd., 3rd District, Bucharest
Function	Residential
Scale	» 46 000 sqm
Client	Adama Group
Year	2007—

Developed in Titan area, Rebreanu Residence brings up in this area the first three-tower building of 14 levels, with a total of 393 apartments. Each apartment is properly equipped to suit the contemporary needs of comfort and green areas in front of the building. The parking space is solved by the two underground parking lots. In front of the building there is a private park which offers a pleasant ambiance to the whole compound.



[www.adept.ro](http://www.adept.ro)

**adept**<sup>®</sup>  
ARCHITECTURE